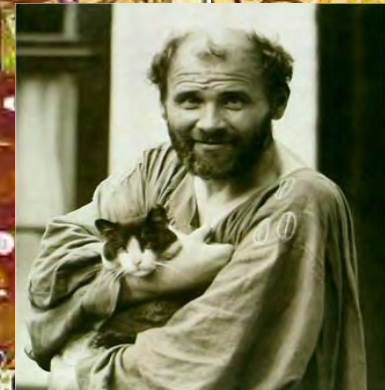
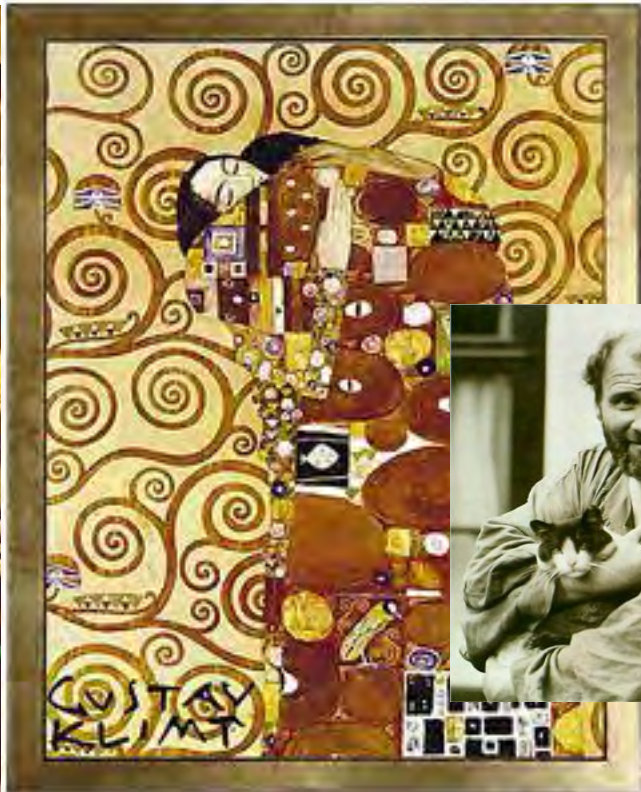


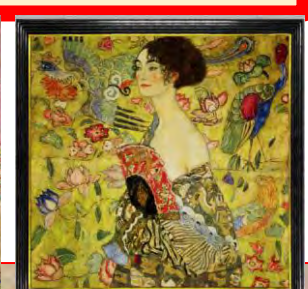


Gustav Klimt Art Workshop





Who was Gustav Klimt?



Primaveri

The Fan

The Kiss



GUSTAV KLIMT

Gustav Klimt is an Austrian symbolist painter, whose primary subject was the female body. He is part of Art Nouveau Movement - an international style of art defined by using lines and nature.



Who was Gustav Klimt?

Klimt is noted for his paintings, murals, sketches, and other objects d'art.

Gustav Klimt was known to use real gold leaf in his paintings. Can you imagine how much money one of his paintings must cost?

Klimt's work is characterized by precise linear (line) drawing and painting.

There is a bold use of colour in his work with symbolic images inspired by nature.

Klimt's most successful works include The Kiss (1908-09) and a series of portraits of fashionable ladies and Adele Bloch-Bauer (1907).

Klimt treats the human figure without shadow and heightens the beauty of skin by surrounding it with areas of highly decorative pattern and shape.

Watch the video to have a look at
Gustav Klimt's most famous artwork.

<https://youtu.be/d4sE12sCQW0>

CONTENT (What do you see in the picture?)

1. What can you see in this painting?
2. Are the figures realistic in the painting? If not, how would you describe them?
3. Is there a hidden meaning in this painting? Why do you think this?

FORM (How has the subject been arranged?)

1. What kind of colours have been used in this painting? Are all areas of colour the same?
2. Describe what types of shapes the artists has used in this painting. Is there a specific shape that could mean something?

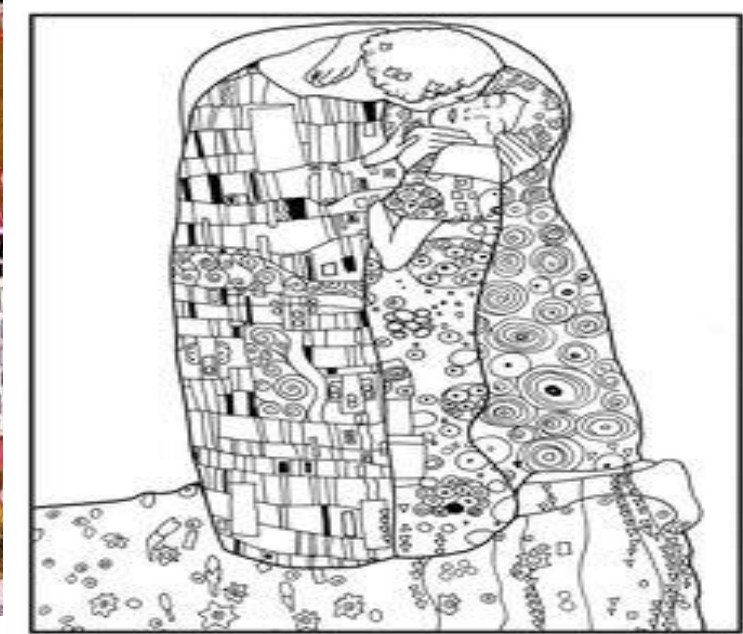
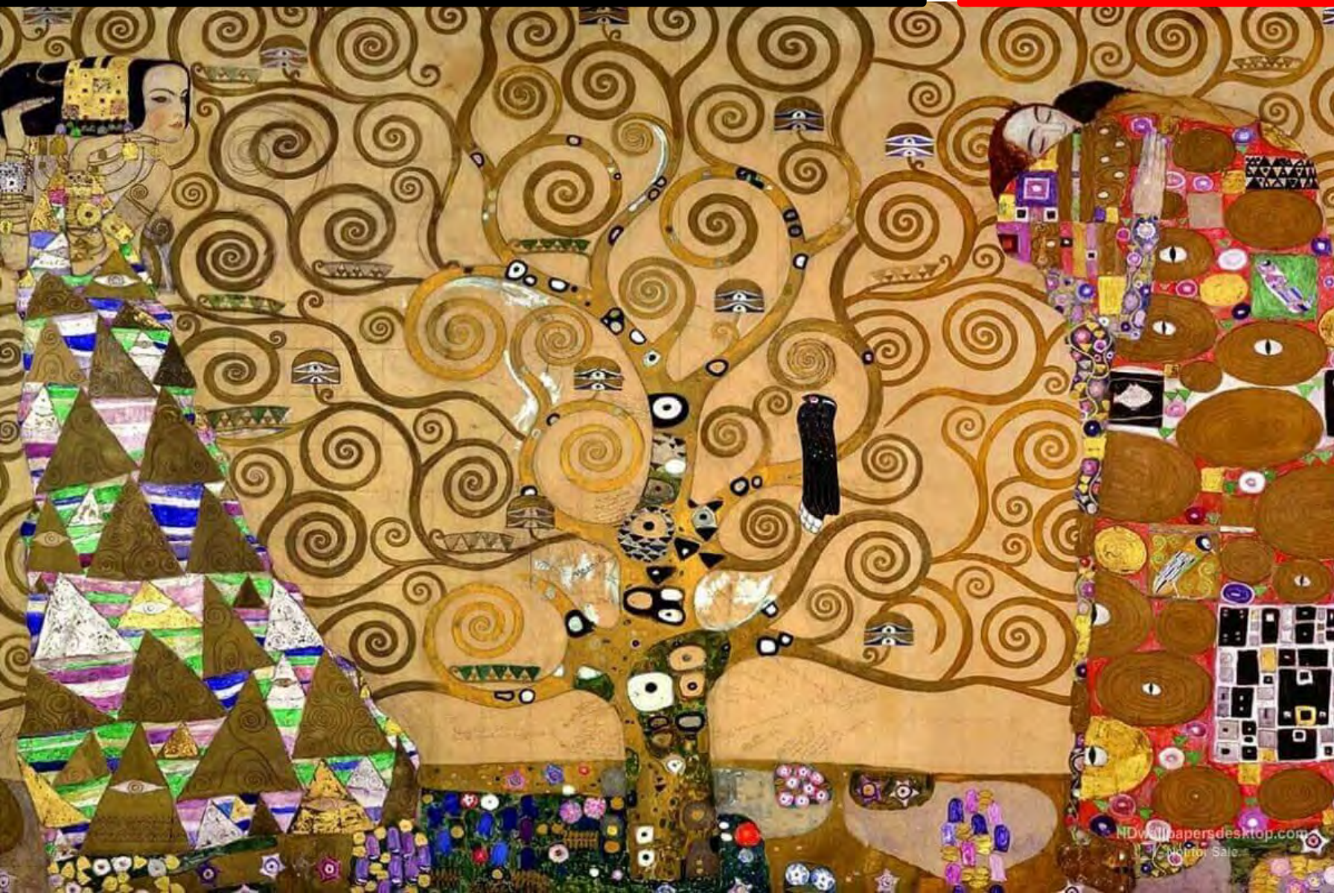
MOOD (What do you feel or what does the artist want to you know?)

1. What were the artists emotions when painting this piece?
2. Does the work affect you? What does it make you feel?
3. Do you like or not like the painting? Why?
4. What parts of the work do you think you could use in your own piece of artwork?

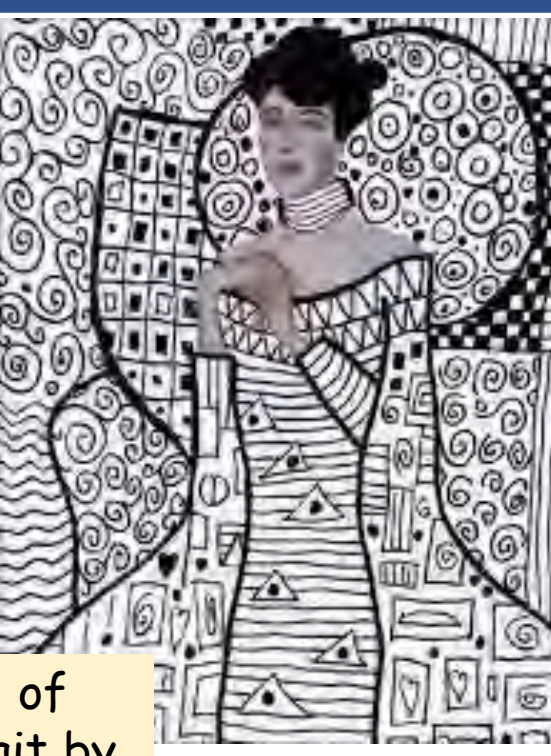
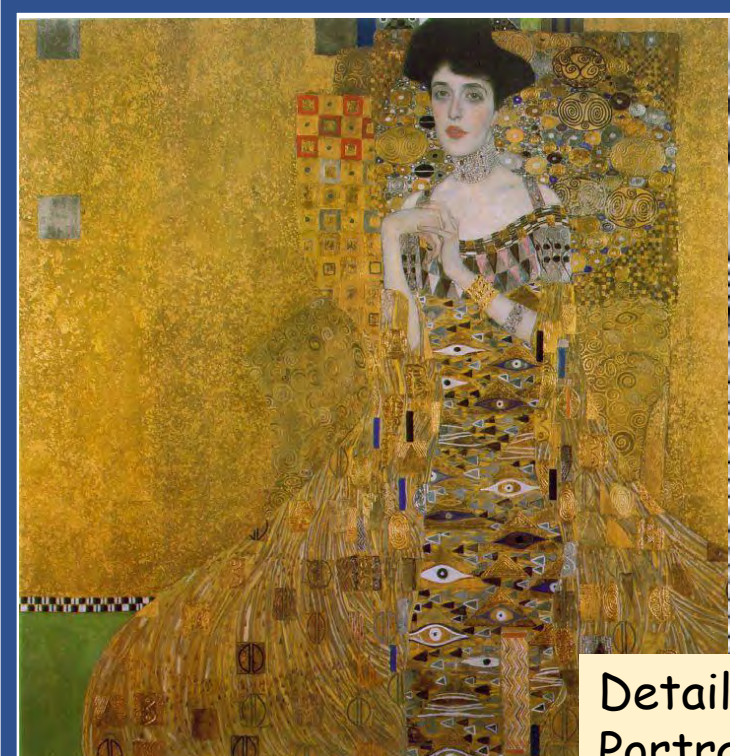


Looking at the work called 'Tree of Life' by Gustav Klimt

What patterns do you see in this work and what do you think this means?



NDWallpapersdesktop.com
Free Sale



Detail of
Portrait by
Adele Bloch



Adele Bloch-
Blauer 1907



Der Kiss
1907



Der Kiss
detail



Der Kiss
details

MAKING PATTERNS IN MY KLIMT WORK



WHAT IS ZENTANGLE?

Zentangle is a method of creating beautiful images from repetitive patterns.



**WATCH THE VIDEO CLIP - what is
your favourite style?**

<https://youtu.be/AsY0eYOGhoM>

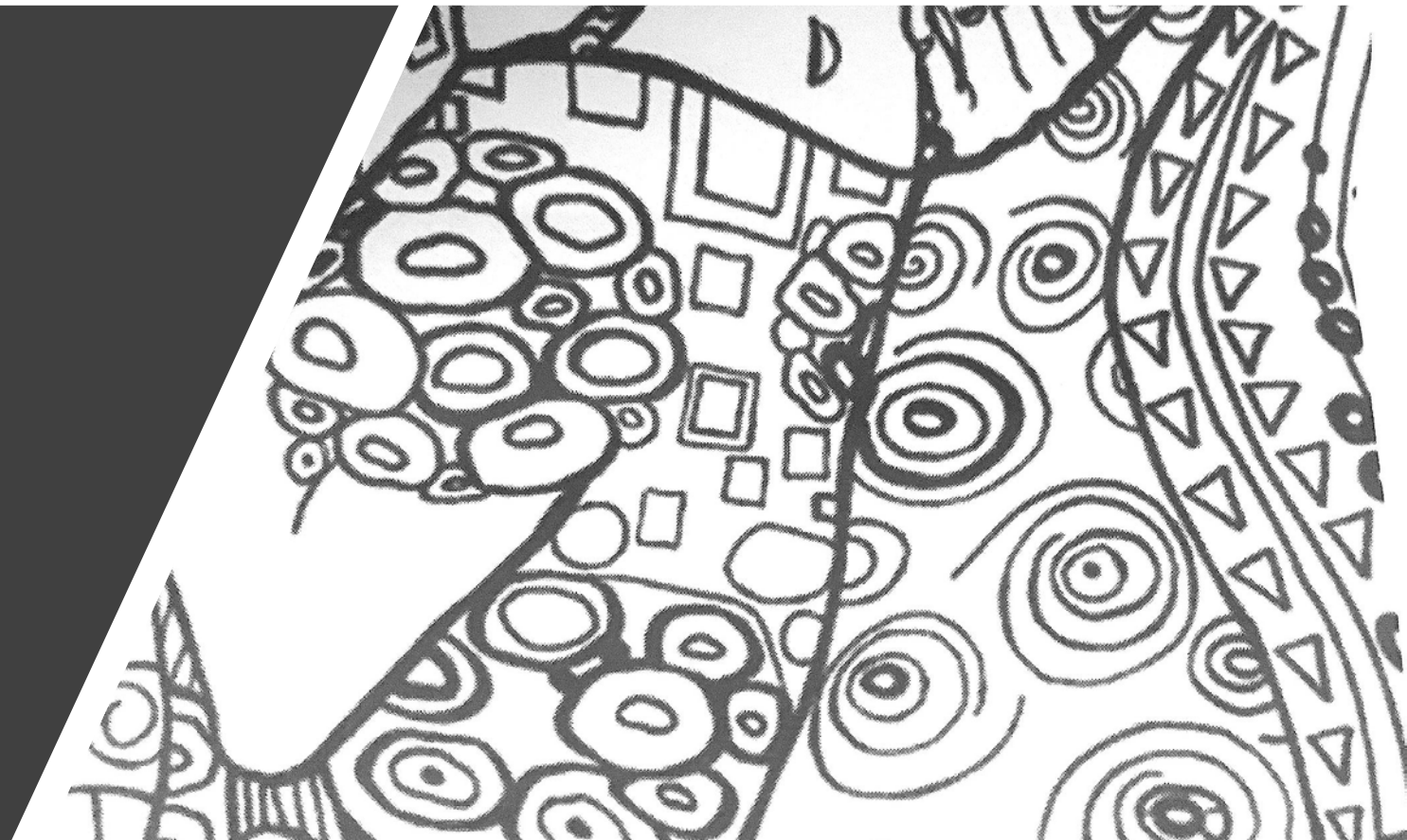


Task 2 - Complete
the Zentangle
practice sheet.

Can you make your
own Zentangle
patterns?

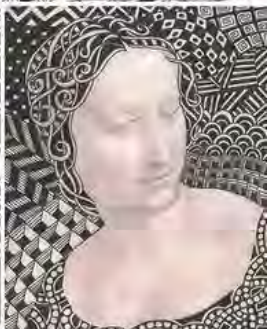
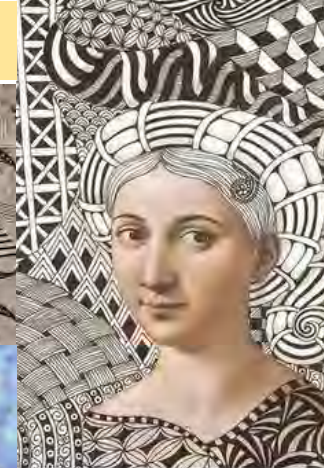
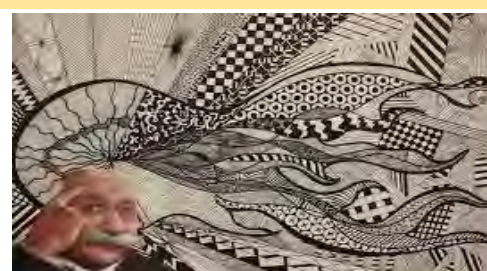


TASK 3: MAKE A
KLIMT HAIR-STYLE
OR BODY





Making my artwork



STEPS TO SUCCESS!

1. On an A4 piece of paper paste a picture of yourself, friend, family member or a celebrity.
2. Lightly sketch out the shapes of the hair or clothes you would like to fill with pattern around your pasted photo
3. Using a pencil or pen draw out Zentangle patterns inspired by Klimt. Use the video clips, artists work and Zentangle sheet to inspire you
4. Challenge: Add in black and white contrasting areas, colour areas, or both!

